

Test Report

Report No.: CTT160416581EN

Date: May 04, 2016

Page 1 of 4

Applicant: RELIANCE PLUS LTD.

Address: UNIT E, 19/F, E-TRADE PLAZA, 24 LEE CHUNG STREET, CHAI WAN, HONG KONG

The following merchandise was (were) submitted and identified by client as:

Sample Name: BERMUDA
Sample Model: MARINA BLUE
P/O No.: 37761
Supplier: Reliance Plus Ltd
Other Information: 0.80mm x 54"
Sample Received Date: Apr. 30, 2016
Completed Date: May 04, 2016

Test Result(s): Please refer to next page(s).

Test Requested and Conclusion(s):

No.	Test Sample	Standard and Requirement	Conclusion(s)
1	Submitted sample	US Public Law 110-314 [Consumer Product Safety Improvement Act of 2008(CPSIA)] - Total Lead (Pb) in accessible substrate materials	PASS
2	Submitted sample	US Public Law 110-314 [Consumer Product Safety Improvement Act of 2008(CPSIA)] - Phthalates	PASS
3	Submitted sample	Phthalates(DnHP)	DATA

Signed for and on Behalf of CTT



Xiaoying.He / Technical Manager
Consumer Testing Technology Co., Ltd.

This test report is issued by the company subject to its General Conditions of Services printed overleaf or available on request and accessible at www.cttlab.com. Attention is drawn to the limitations of liability, indemnification and jurisdictional issues defined therein. Unless otherwise stated the results shown in this report refer only to the sample(s) tested. Without prior written permission of the company, this test report cannot be reproduced, except in full. Items marked with "n" or "m" means they are not accredited by CNAS or CMA, "s" means the item of subcontractor is not accredited by CNAS or CMA.

Test Report

Report No.: CTT160416581EN

Date: May 04, 2016

Page 2 of 4

Test Result(s):

The Lead content of accessible substrate materials - CPSIA

Method:

Metal - CPSC-CH-E1001-08.3

Nonmetal - CPSC-CH-E1002-08.3

Analyzed by Atomic Absorption Spectroscopy (AAS) or Inductively Coupled Plasma Atomic Emission Spectroscopy (ICP-AES).

Material No.	Limit (mg/kg)	Result (mg/kg)	Conclusion
1	100	N.D.	PASS

- Note:**
1. mg/kg = milligram per kilogram (ppm).
 2. N.D. = Not Detected (< RL).
 3. RL (Reporting Limit) = 10 mg/kg.

This test report is issued by the company subject to its General Conditions of Services printed overleaf or available on request and accessible at www.cttlab.com. Attention is drawn to the limitations of liability, indemnification and jurisdictional issues defined therein. Unless otherwise stated the results shown in this report refer only to the sample(s) tested. Without prior written permission of the company, this test report cannot be reproduced, except in full. Items marked with "n" or "m" means they are not accredited by CNAS or CMA, "s" means the item of subcontractor is not accredited by CNAS or CMA.



Test Report

Report No.: CTT160416581EN

Date: May 04, 2016

Page 3 of 4

Test Result(s):

Phthalates - CPSIA

Method: CPSC-CH-C1001-09.3, analyzed by Gas Chromatograph-Mass Spectrometry (GC-MS).

Substances	DBP	BBP	DEHP	DINP	DNOP	DIDP	Conclusion
CAS No.	84-74-2	85-68-7	117-81-7	28553-12-0	117-84-0	26761-40-0	
Limit (mg/kg)	1000	1000	1000	1000	1000	1000	
RL (mg/kg)	30	30	30	50	30	50	
Material No.	Result (mg/kg)						
1	N.D.	N.D.	N.D.	N.D.	N.D.	N.D.	PASS

Material No.	Substances	CAS No.	RL (mg/kg)	Result (mg/kg)
1	DnHP	84-75-3	30	N.D.

- Note:**
1. mg/kg = milligram per kilogram (ppm).
 2. N.D. = Not Detected (< RL).
 3. RL = Reporting Limit.
 4. Children's toys and child care articles shall not more than 1000 mg/kg DBP, BBP or DEHP.
 - Children's toys defined as 12 years and under.
 - Child care articles to facilitate sleep or feeding of children 3 years and under, or to help children with sucking and teething.
 5. Children's toy that can be placed in the mouth and child care articles shall not more than 1000 mg/kg DINP, DNOP or DIDP.
 - Toys that can be kept in the mouth by a child so that it can be sucked or chewed.
 - Toys or part of toy with one dimension less than 5 cm.

Test Material List

The following materials apply only to the samples submitted for chemical testing

Material No.	Description	Location
1	Blue synthetic with white fibre	Body

Remark:

CTT Co., Ltd. is the US Consumer Product Safety Commission (CPSC) Accredited Third Party Testing Laboratory, identification number is 1026, and shall refer to <http://www.cpsc.gov/cji-bin/labsearch/>.

This test report is issued by the company subject to its General Conditions of Services printed overleaf or available on request and accessible at www.cttlab.com. Attention is drawn to the limitations of liability, indemnification and jurisdictional issues defined therein. Unless otherwise stated the results shown in this report refer only to the sample(s) tested. Without prior written permission of the company, this test report cannot be reproduced, except in full. Items marked with "n" or "m" means they are not accredited by CNAS or CMA, "s" means the item of subcontractor is not accredited by CNAS or CMA.



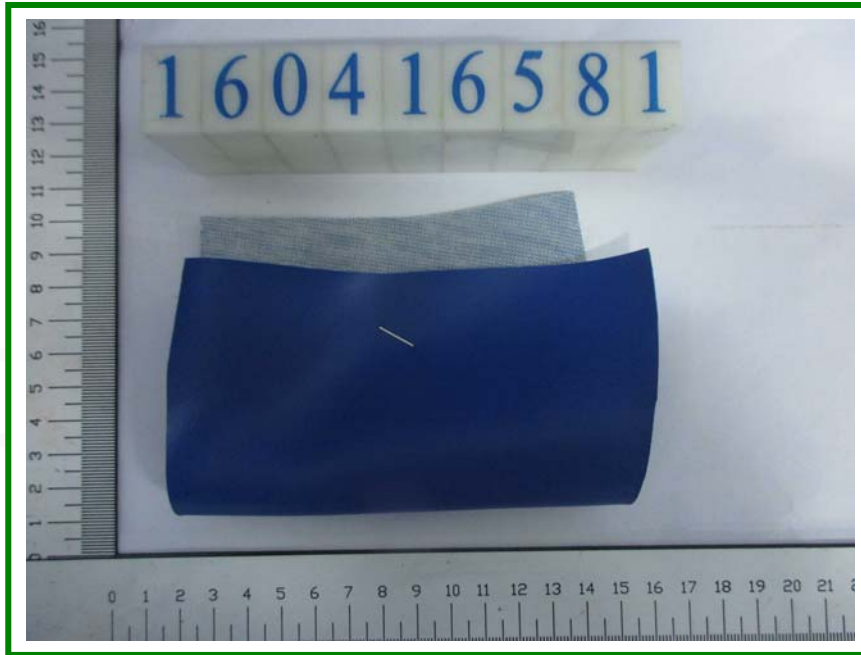
Test Report

Report No.: CTT160416581EN

Date: May 04, 2016

Page 4 of 4

Photo of Sample:



End of Report

This test report is issued by the company subject to its General Conditions of Services printed overleaf or available on request and accessible at www.cttlab.com. Attention is drawn to the limitations of liability, indemnification and jurisdictional issues defined therein. Unless otherwise stated the results shown in this report refer only to the sample(s) tested. Without prior written permission of the company, this test report cannot be reproduced, except in full. Items marked with "n" or "m" means they are not accredited by CNAS or CMA, "s" means the item of subcontractor is not accredited by CNAS or CMA.